

EQUINOX[®]

Shower Pumps



Brass Body Pumps

Compact Design

Powerful & Efficient

3 Year Warranty

TUCSON[®]
Fluid Dynamics

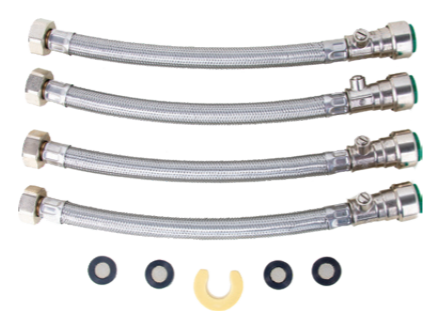
3 YEAR WARRANTY

3 YEAR WARRANTY



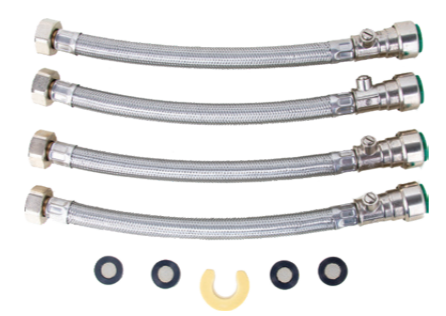
EQUINOX®

2 Bar Positive Head Shower Pump



EQUINOX®

2 Bar Universal Head Shower Pump



Features

- Brass Body Material - CW617N
- Robust and compact design
- 304 Stainless steel flexible hoses
- Quick attached push-fit connections
- Powerful and efficient induction motor
- Carbon-Silicone-Carbide mechanical seals
- EPDM housing O rings & washers
- Quiet operation of less than 66 dB
- 1.5 meter of pre-wired motor cable
- Easy to install and operate
- Auto reset thermal switch
- Continuous (S1) rated design
- 3 years manufacturer's warranty

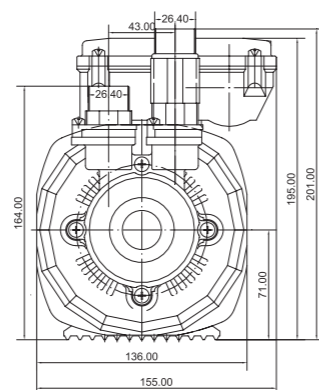
Technical Data

- Rate Voltage/Frequency: 230V/50Hz
- Rated Power Input P1 - 500 Watt
- Rated Current Input (A): 2.2A
- Fuse (Amps): Fuse 7A
- Electrical Class (I, II or III): Class I
- Ingress Protection Rating: IP44
- Maximum Head: Hmax 21m
- Minimum Head: Hmin 0.3m
- Qmax (Flowrate) L/Min: Qmax 46.6L/min
- Pump Duty: Continuous (S1)
- Capacitor Rating/Spec: CAP 12µF/450V S2
- Insulation Class (F): Class 155(F)
- Motor Speed (R/pm): 2900 R/pm
- Max Ambient Temperature (AMB -°C): AMB 40°C
- Max water temperature (°C): Max 65°C
- Acoustic Noise (dB): <66 dB
- Nett weight: 10KG

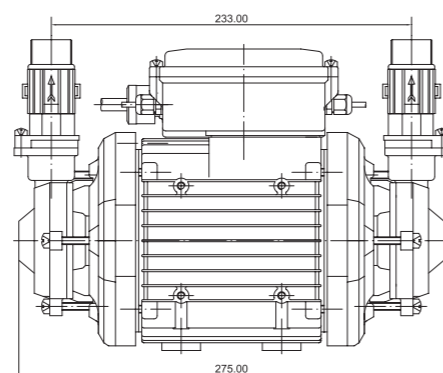
Product Components

- One Equinox Shower Pump
- Four 21mm / 3/4" Irish / Push-Fit stainless steel flexible hoses with isolating valves OR Four 22mm Push-Fit stainless steel flexible hoses with isolating valves
- One anti-vibration base mat
- Installation and operating manual
- Warranty registration card

CODE	PRODUCT	PALLET QTY
771920	2 Bar Positive Head (Imperial Connections)	36
771932	2 Bar Positive Head (Metric Connections)	36



Equinox Positive Head Shower Pump Dimensions



Features

- Brass Body Material - CW617N
- Robust and compact design
- 304 Stainless steel flexible hoses
- Quick attached push-fit connections
- Powerful and efficient induction motor
- Carbon-Silicone-Carbide mechanical seals
- EPDM housing O rings & washers
- Quiet operation of less than 66 dB
- 1.5 meter of pre-wired motor cable
- Easy to install and operate
- Auto reset thermal switch
- Continuous (S1) rated design
- 3 years manufacturer's warranty

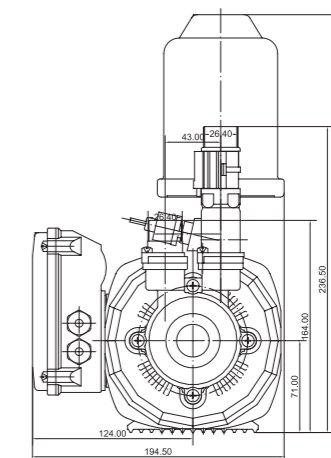
Technical Data

- Rate Voltage/Frequency: 230V/50Hz
- Rated Power Input P1 - 500 Watt
- Rated Current Input (A): 2.2A
- Fuse (Amps): Fuse 7A
- Electrical Class (I, II or III): Class I
- Ingress Protection Rating: IP44
- Maximum Head: Hmax 21m
- Minimum Head: Hmin 0.3m
- Qmax (Flowrate) L/Min: Qmax 37.2L/min
- Pump Duty: Continuous (S1)
- Capacitor Rating/Spec: CAP 12µF/450V S2
- Insulation Class (F): Class 155(F)
- Motor Speed (R/pm): 2900 R/pm
- Max Ambient Temp (AMB -°C): AMB 40°C
- Max water temperature (°C): Max 65°C
- Acoustic Noise (dB): <66dB
- Nett weight: 10.5KG

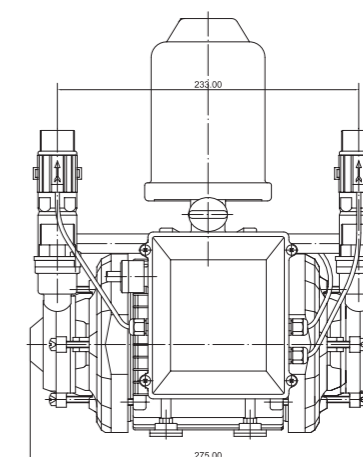
Product Components

- One Equinox Shower Pump
- Four 21mm / 3/4" Irish / Push-Fit stainless steel flexible hoses with isolating valves OR Four 22mm Push-Fit stainless steel flexible hoses with isolating valves
- One anti-vibration base mat
- Installation and operating manual
- Warranty registration card

CODE	PRODUCT	PALLET QTY
771921	2 Bar Universal Head (Imperial Connections)	45
771933	2 Bar Universal Head (Metric Connections)	45



Equinox Universal Head Shower Pump Dimensions



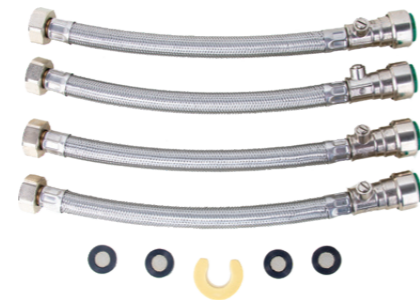
3 YEAR WARRANTY

3 YEAR WARRANTY



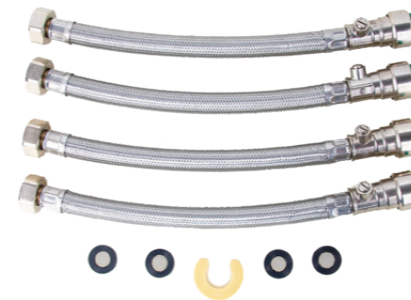
EQUINOX®

4 Bar Positive Head Shower Pump



EQUINOX®

4 Bar Universal Head Shower Pump



Features

- Brass Body Material - CW617N
- Robust and compact design
- 304 Stainless steel flexible hoses
- Quick attached push-fit connections
- Powerful and efficient induction motor
- Carbon-Silicone-Carbide mechanical seals
- EPDM housing O rings & washers
- Quiet operation of less than 66 dB
- 1.5 meter of pre-wired motor cable
- Easy to install and operate
- Auto reset thermal switch
- Continuous (S1) rated design
- 3 years manufacturer's warranty

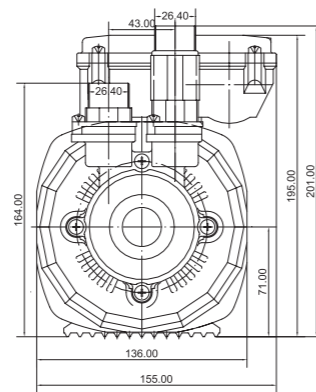
Technical Data

- Rate Voltage/Frequency: 230V/50Hz
- Rated Power Input P1 - 900 Watt
- Rated Current Input (A): 3.61A
- Fuse (Amps): Fuse 10A
- Electrical Class (I, II or III): Class I
- Ingress Protection Rating: IP44
- Maximum Head: Hmax 40m
- Minimum Head: Hmin 0.3m
- Qmax (Flowrate) L/Min: Qmax 56.7L/min
- Pump Duty: Continuous (S1)
- Capacitor Rating/Spec: CAP 12µF/450V S2
- Insulation Class (F): Class 155 (F)
- Motor Speed (R/pm): 2900 R/pm
- Max Ambient Temperature (AMB -°C): AMB 40°C
- Max water temperature (°C): Max 65°C
- Acoustic Noise (dB): <66 dB
- Nett weight: 11.5KG

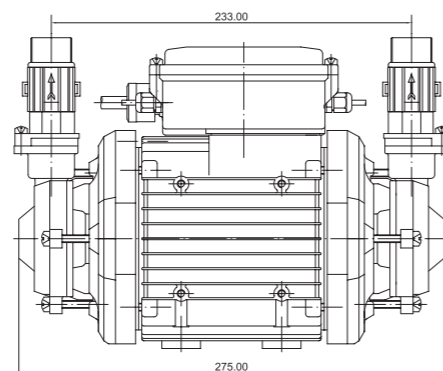
Product Components

- One Equinox Shower Pump
- Four 21mm / 3/4" Irish / Push-Fit stainless steel flexible hoses with isolating valves OR Four 22mm Push-Fit stainless steel flexible hoses with isolating valves
- One anti-vibration base mat
- Installation and operating manual
- Warranty registration card

CODE	PRODUCT	PALLET QTY
771922	4 Bar Positive Head (Imperial Connections)	36
771934	4 Bar Positive Head (Metric Connections)	36



Equinox Positive Head Shower Pump Dimensions



Features

- Brass Body Material - CW617N
- Robust and compact design
- 304 Stainless steel flexible hoses
- Quick attached push-fit connections
- Powerful and efficient induction motor
- Carbon-Silicone-Carbide mechanical seals
- EPDM housing O rings & washers
- Quiet operation of less than 66 dB
- 1.5 meter of pre-wired motor cable
- Easy to install and operate
- Auto reset thermal switch
- Continuous (S1) rated design
- 3 years manufacturer's warranty

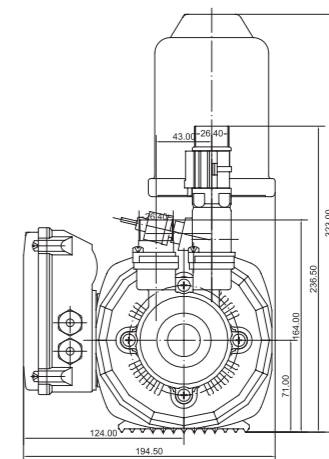
Technical Data

- Rate Voltage/Frequency: 230V/50Hz
- Rated Power Input P1 - 900 Watt
- Rated Current Input (A): 3.46A
- Fuse (Amps): Fuse 10A
- Electrical Class (I, II or III): Class I
- Ingress Protection Rating: IP44
- Maximum Head: Hmax 40m
- Minimum Head: Hmin 0.3m
- Qmax (Flowrate) L/Min: Qmax 45.6L/min
- Pump Duty: Continuous (S1)
- Capacitor Rating/Spec: CAP 12µF/450V S2
- Insulation Class (F): Class 155(F)
- Motor Speed (R/pm): 2900 R/pm
- Max Ambient Temp (AMB -°C): AMB 40°C
- Max water temperature (°C): Max 65°C
- Acoustic Noise (dB): <66dB
- Nett weight: 12KG

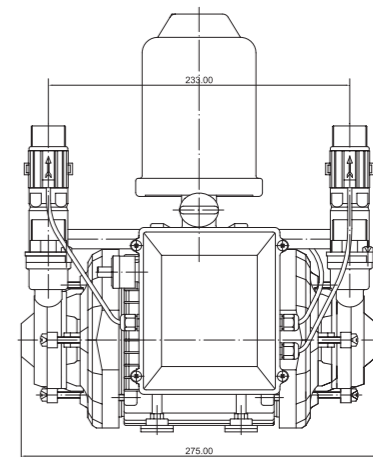
Product Components

- One Equinox Shower Pump
- Four 21mm / 3/4" Irish / Push-Fit stainless steel flexible hoses with isolating valves OR Four 22mm Push-Fit stainless steel flexible hoses with isolating valves
- One anti-vibration base mat
- Installation and operating manual
- Warranty registration card

CODE	PRODUCT	PALLET QTY
771923	4 Bar Universal Head (Imperial Connections)	45
771935	4 Bar Universal Head (Metric Connections)	45



Equinox Universal Head Shower Pump Dimensions



EQUINOX[®]
Shower Pumps

TUCSON[®]
Fluid Dynamics

Tucson Pumps Ltd.
Instantor Works
Santry Avenue, Santry
Dublin D09 K160

T +353 1 842 6255
E sales@tucsonpumps.ie



www.tucsonpumps.ie

Unpriced - Issue 1 - October 2022